

PA 1958
5 YEAR PLATES



GOVERNOR'S PLATE

1959-60-61-62
RENEWAL STICKERS



OFFICIAL
FOR CARS OWNED BY THE
COMMONWEALTH OF PA. NO FEE



ANTIQUE
PERMANENT PLATE FEE \$12.50



PASSENGER
FLAT FEE \$10.00



SCHOOL BUS
FEE BASED ON CHASSIS WEIGHT AND
CLASSIFICATION FEES START AT \$6.50



BUS AND TAXI
FEE BASED ON SEATING CAPACITY
FEES START AT \$25.00



TRUCKS AND TRUCK TRACTORS
FEE BASED ON CHASSIS WEIGHT AND
CLASSIFICATION FEES START AT \$6.50



FARM-INDUSTRIAL TRACTORS
FEE BASED ON USE \$5.00 - \$16.00



TRACTOR DEALER
FARM-INDUSTRIAL TRACTORS FEE 1st PLATE \$25.00
ADDITIONAL PLATE \$2.00



TRAILER
HOUSE TRAILER FEE \$12.00 - FREIGHT TRAILER
FEE BASED ON WEIGHT STARTING AT \$16.00



PRESS PHOTOGRAPHER
2 PLATES FEE \$15.00



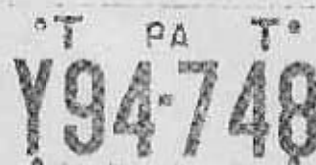
MOTOR VEHICLE DEALER
1st PLATE FEE \$25.00
ADDITIONAL PLATE \$5.00



AMATEUR RADIO OPERATORS
PLATE BEARS CALL LETTERS
FEE \$13.00



MOTORCYCLE
FLAT FEE \$4.00



TEMPORARY
ISSUED FOR DISTRIBUTION BY
"A" AND "B" DEALERS FEE 50¢



**MOTORCYCLE
DEALER**
FEE EACH PLATE \$5.00